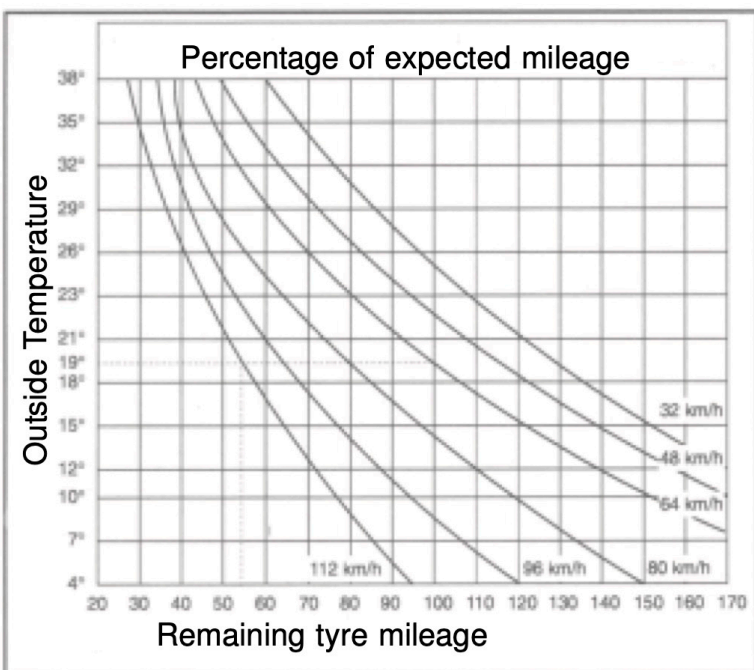


Reasons for increased tyre wear

If the toe-in setting is not as specified, increased tyre wear may occur.

Low tyre pressure or overloading of the trailer are the most frequent reasons for increased tyre wear.

The figure shows the remaining mileage, the highest value being reached at optimum tyre pressure (100%). If overloading of the vehicle is avoided, optimum tyre mileage may also be



Excessive speed and high temperature also contribute to increased tyre wear.



The point of normal tyre wear (100%) is specified at an average speed of 64 km/h and an average temperature of 19° C.