

Astella. New luxury line.

 **ADRIA**





#inspiringadventures



inspirations  
magazine

DISCOVER MORE  
IN THE NEW EDITION  
OF INSPIRATIONS MAGAZINE,  
ONLINE AT

[WWW.ADRIA-MOBIL.COM](http://WWW.ADRIA-MOBIL.COM)





Watch the ASTELLA movie  
at: [www.newastella.com](http://www.newastella.com)

## Astella. New luxury experience.

**Dare to dream.** Do you have your perfect place? We all have a dream, that ultimate holiday home by the lake, next to the beach or in the mountains, away from it all, yet cocooned in your own private luxury.

Our aim? To create something like no other. Is it a luxury caravan or a mobile home? As you can tow it like a regular caravan or set it up like a static mobile home and move it easily when you need to, maybe it's both.



# breaking the rules



PURE DESIGN

## SMOOTH CLEAN LINES

and a purity of shape and design, for a new signature luxury line. No unnecessary details, just everything smooth, functional and elegant. An interior with big volume, flowing spaces. Our new signature line, luxurious in its simplicity.

*“It’s a feeling. Of everything being as it should”.*

## ALWAYS INNOVATING

is a philosophy at Adria and with Astella, the brief was to create an inspiring new form of luxury holiday home, on wheels.

As project leader Erna Povh puts it *“We decided that rather than start with a good benchmark product like a regular caravan we started with a deep dive into the holiday experience we wanted to deliver. You could say we turned conventional wisdom on its head and we broke all the rules”.*

*“The result is a really innovative and unique home. Some would view it as a caravan, albeit a luxurious one, because you can tow it like any regular caravan. Others see it in the same light as a mobile home, a static caravan if you like. Whatever you decide to call it, think of it as your own luxurious holiday home, set down where you most like to spend your time but moveable at the end of the holiday season or when you want to change the location”.*





## PROVEN AERODYNAMICS

## SHAPED BY THE WIND

uncluttered and with proven aerodynamics, learned from the aerospace industry, to help airflow when towing. Unique exterior profile, the shape of things to come.

*"It's a feeling. Of being shaped by the wind".*







## CONNECTED LIVING

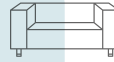
### DISCOVER YOUR PERFECT HABITAT

An exclusive, flexible and open plan interior which extends through the panoramic doors and windows to the great outdoors. Everything you need from home and the feeling of connected living right there in your natural habitat.

*"It's a feeling. Of being at one with nature".*







#### LUXURY EXPERIENCE

#### LUXURIOUS IN ITS SIMPLICITY

Large free flowing but connected spaces, luxury accommodation. Spa style bathroom, designer kitchen and an open living room for inside outside living. A calm, well organized interior, which lifts your spirits and calms your soul.

*“It’s a feeling. Of being in your own dream home”.*



# designed for living

## DETAILS MATTER

Astella brings a cool new style, with clean modern lines and large volume spaces, designed for living, with a choice of layouts and everything in the right place.



*It feels like a  
luxurious beach  
house, everything  
just flows and  
cocoons you.*

## LIVING

Luxurious, contemporary  
interior design. Flowing layouts,  
with great living spaces,  
complemented by touches  
of luxury.







## KITCHEN

A kitchen straight from a cool apartment, based on ergonomic principles, with style, great space and functionality. Featuring Corian® worktops and quality appliances.







## BEDROOM

Private, luxurious home-style bedroom with innovative controllable lighting and bed with comfortable Octasprings® mattresses.

## MULTI-MEDIA

Media controller, multiple USB sockets and sensibly located TV holder and Bluetooth amplifier.

*Everything at your fingertips.*

*A bedroom  
that's easy  
to fall in  
love with.*



## STORAGE

Optimized interior storage throughout, with places for all the things you need.

*Everything seems  
to have a place.*







## LIGHTING

Exclusive LED contour lighting outside, zonal, spot and LED lighting inside, including moveable track lighting in the living areas.

*Intelligently designed and located lighting throughout.*

## BATHROOM

A boutique hotel-style, spacious and ergonomically designed bathroom with large separate shower and quality fittings.

*A bathroom  
with space  
is pure luxury*





# designed to perform

## REAL-WORLD PERFORMANCE

Everything is designed, developed and tested to ensure your safety, comfort and enjoyment. Designed to perform, built to enjoy and built to last.



### INTELLIGENT DESIGN

Exclusive exterior styling with unique profile and integrated LED contour lights.



### CHASSIS

Performance chassis integrated into the body for torsional strength.

### BODY CONSTRUCTION

Adria 'Comprex' body construction for durability.



### CLIMATE CONTROL

All year round use with Alde heating. Pre-installation for air-conditioning.

### INSULATION

Built to Adria's 'Thermo-build' standards, with no 'cold-spots'.

### AIRFLOW

Adria Air Flow System for heating and ventilation, without condensation.

### WINDOWS & DOORS

Integrated windows and panoramic doors for optimum natural lighting, ventilation, privacy and security.

### FURNITURE & STORAGE

Craftsman-built cabinetry and home-style seating. Plenty of smart, flexible storage too.

### COMFORT

Contemporary interior design with the luxury of space.

### CUSTOMER SERVICE

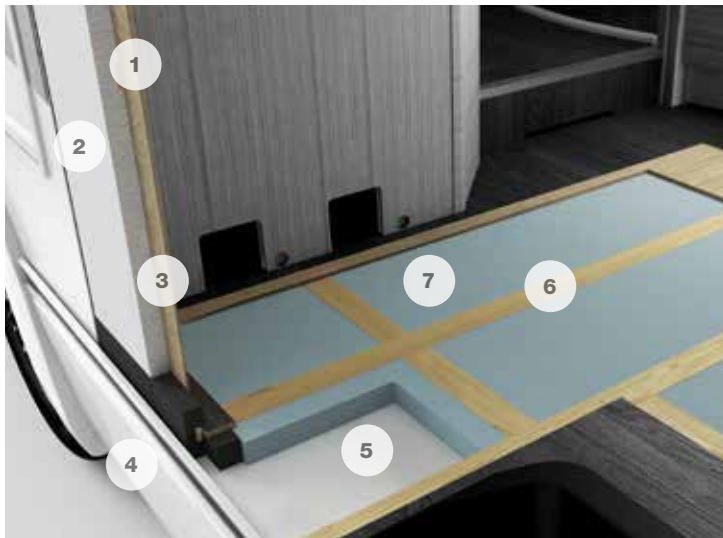
Class leading warranty and service support by selected Adria dealers.

\*Some features may not be available on all models. Please check [www.adria-mobil.com](http://www.adria-mobil.com) for individual model specifications and technical details.



# construction

Adria's 'Comprex' construction combines the torsional strength of wood, the durability of polyurethane and the moisture-stopping properties of polyester.



- 1 Composite wood panel
- 2 Polyurethane sealing
- 3 EPS Styrofoam
- 4 Exterior polyester body shell cladding (sidewall)
- 5 Exterior polyester body shell cladding (floor)
- 6 Reinforced hardwood profile
- 7 XPS Styrofoam insulation foam



## TESTED TO EXTREMES

Astella is tested to extremes in our own climatic chamber, including 35 degrees heat differences in 4 hours as well as tests for humidity and for water ingress in our Monsoon Test facility.

## PANORAMIC DOORS

Adria exclusive design double panorama doors for indoor-outdoor living:



- Half open, or both open settings.
- Double-glazed, special durable acrylic material.
- Integrated double locking mechanism for security.
- Integrated mosquito net and privacy curtains.
- Insulated, heat & ventilation management, no condensation.





Watch the ASTELLA movie  
at: [www.newastella.com](http://www.newastella.com)



### **TOWING INFORMATION**

Thanks to its proven aerodynamics and AL-KO chassis  
you can tow an Astella like a regular caravan.



## YOUR ASTELLA

For your perfect holiday place you'll want to choose the layout which best suits your needs.  
Choose from three Astella models, each with its own unique layout.



astella  
704<sub>HP</sub>



astella  
754<sub>DP</sub>



astella  
904<sub>HP</sub>

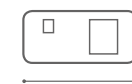


WALKTHROUGHS AT [WWW.NEWASTELLA.COM](http://WWW.NEWASTELLA.COM)



# astella 704<sub>HP</sub>

The perfect place for a couple with one private bedroom and large living room, each with panorama doors for connected indoor-outdoor living. Sleeping berths for 2+2 people with easy set up sofa bed.



7600 mm



2\_4



8992 mm



Kg 2.500/3.000



2520 mm



silverstar  
bluestar





## Key features

- Exclusive double panoramic doors.
- Exclusive extra-large kitchen design.
- Luxury private bedroom.
- Elegant luxury bathroom.
- Integrated Alde heating.





# astella 704<sub>HP</sub>

*Luxurious interior comfort with home style furniture.*



*Exclusive  
kitchen design,  
fully-equipped,  
with Corian®  
worktop.*





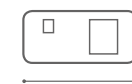


*Luxurious master suite bedroom with panoramic doors for indoor-outdoor living.  
Luxury private bedroom with Octasprings® mattress.*



# astella 754<sub>DP</sub>

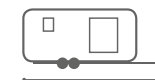
This innovative layout provides the perfect place for a couple or complete family, thanks to its home concept living room and spa sized bathroom. Sleeping berths for 2+2 people with easy set up sofa bed.



8090 mm



2\_4



9477 mm



Kg 2.500/3.000



2520 mm



silverstar  
bluestar





## Key features

- Large connected open living spaces.
- Exclusive design panoramic doors.
- Luxury private bedroom with panoramic window.
- Elegant luxury bathroom.
- Easy set-up sofa bed







*Luxury private bedroom with Octasprings® mattress.*



*Exclusive kitchen design, fully-equipped, with Corian® worktop.*







astella 754<sub>HP</sub>

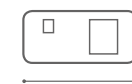
*Elegant luxury bathroom like in a boutique hotel.*





# astella 904<sub>DP</sub>

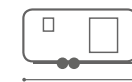
The perfect layout for a family or larger group thanks to its innovative living space that offers enough sleeping and socializing space. Sleeping berths for 2-6 people, with easy set up bunk-bed system



9538 mm



2\_6



10922 mm



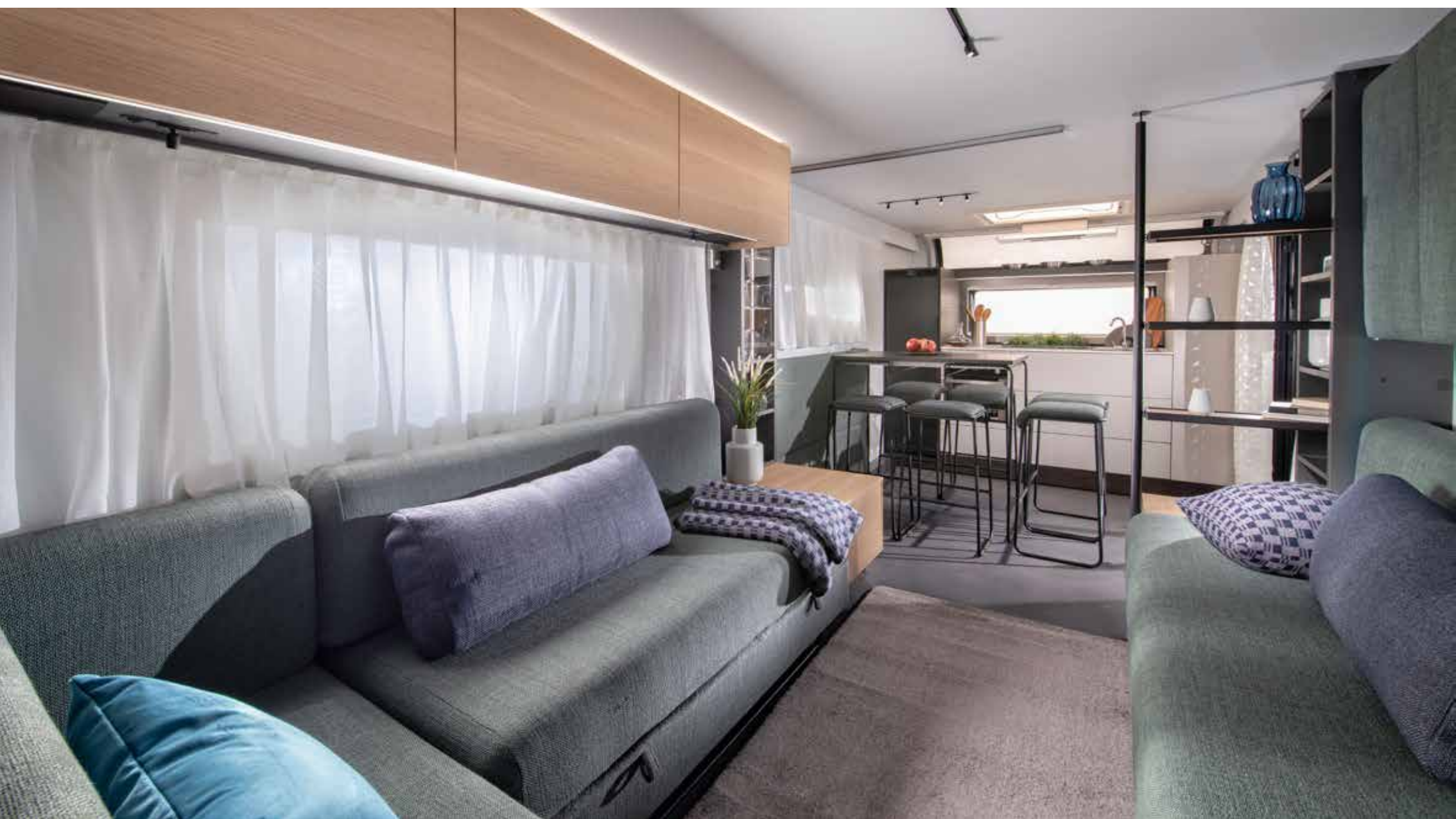
Kg 2.800/3.000



2522 mm



silverstar  
bluestar





## Key features

- Exclusive design, fully-equipped kitchen.
- Adria exclusive bunk-bed solution.
- Luxury private bedroom.
- Exclusive design panoramic doors.
- Integrated Alde heating.











astella 904<sub>HP</sub>



*Exclusive kitchen  
design, fully-equipped,  
with Corian® worktop.*

# adria mach

## MOBILE ARTIFICIAL INTELLIGENCE COMMUNICATIONS HARDWARE

Astella offers Adria MACH smart control mobile application as an option, which offers clever remote control of all-important functions and even more comfort when inside.

## SIMPLIFY YOUR LIFE & HELP YOUR ADVENTURE



### REMOTE CONTROL OF IMPORTANT FUNCTIONS

Lights, heating, cooling, battery,  
water, gas, fridge ...  
(with statistics and prediction)



### MANAGE YOUR VEHICLE

Interactive and intuitive manuals,  
levelling information  
(angle-accelerometer),  
key technical data ...



### NAVIGATION & POI

Nearby refilling points suggestion  
and large POI database  
(Adria dealers, camps, parking  
spots, restaurants, landmarks...)



### MOBILE OFFICE

Wi-Fi hotspot functionality  
(access to web, listening  
to IP radio, watching IP TV ...)

MACH is available for smartphones, tablets (Android, iOS\*) and computers (web app\*). MACH functions also in remote areas without mobile signal due to its internal storage. For some functionalities extra SIM card is required.



## HOW MACH WORKS



### INSTALL

the app from Google Play  
or Apple Store\* or visit  
[adria-mobil.com/mach](http://adria-mobil.com/mach)



### CREATE

your Adria ID



### CONNECT

to your vehicle



### ENJOY

tailored experience



\*December 2019

VISIT [WWW.ADRIA-MOBIL.COM/MACH](http://WWW.ADRIA-MOBIL.COM/MACH) FOR MORE INFORMATION.



# comfort

## YOUR STYLE. YOUR PLACE

A holiday home which matches your style and the way you live.

## FURNISHINGS

Luxuriate in contemporary living spaces where everything just seems to work together for a calm, harmonious and effortless experience. Choose from a selection of textiles and cushion sets for added personality.

### BLUESTAR



### SILVERSTAR



## OPTIONS

Make your Astella even more luxurious by adding the following options:

- Thule 6,0m awning in matching colour
- Microwave oven.
- Clima Aventa 2,4kw
- Alloy wheels.

FOR ADDITIONAL OPTIONS VISIT OUR WEBSITE [WWW.NEWASTELLA.COM](http://WWW.NEWASTELLA.COM)

# luXe

★ MATTRESS ★



# only from Adria

**THE NEW ASTELLA IS EXCLUSIVELY DESIGNED AND MADE BY ADRIA MOBIL**



## **PASSION & EXPERIENCE**

Adria has been designing and making leisure vehicles since 1965 and mobile homes since 2004.

## **INTELLIGENT DESIGN**

Adria leads in intelligent design, technology, construction methods and materials.

## **AWARD-WINNING PRODUCTS**

We are always innovating and Adria are always innovating and our products regularly win independent awards for design, innovation, quality and value.

## **QUALITY**

Adria products have a reputation for dependable quality, reliability and durability, using proven world-class manufacturing techniques.

## **WORLD CLASS MANUFACTURING**

Adria operates the most advanced, state of the art production facilities, which are ISO9001 and EN1647 certified for business excellence and environmental standards.

## **PEACE OF MIND**

All Adria products come with a class-leading warranty and professional service support, through specially appointed Adria dealers, backed up by a world-class parts supply and aftersales service.



# accessories

You can create an even more luxurious experience, with a selection of recommended lifestyle accessories for your Astella, further information at [www.newastella.com](http://www.newastella.com)

1. Thule 6,0m awning in matching colour
2. Outdoor seating
3. Outdoor lighting

**Adria Authorised  
Astella Dealers**

Find your nearest Astella  
dealer at [www.newastella.com](http://www.newastella.com)







# ADRIA

## ADRIA MOBIL, D.O.O.

Straška cesta 50

8000 Novo mesto

Slovenia

Tel. +386(0)7 393 71 00

Fax: +386(0)7 393 72 00

Email: [info@adria-mobil.si](mailto:info@adria-mobil.si)

Website: [www.adria-mobil.com](http://www.adria-mobil.com)

**Notices:** The purpose of this catalogue is illustrative. Pictures inside the catalogue may include some elements not belonging to standard equipment or portray products belonging to different markets. Products may change from technical or commercial points of view and in respect of regulations. Please contact your Adria dealer to obtain detailed information before purchasing.

Published by: Adria Mobil, d.o.o.; Art Direction: Pubblimarket2; Production: Enigma d.o.o.; Photography: Branko Čeak, Jože Maček, Jure Horvat, Styling: Nataša Mandelj Čeak; Lifestyle photos: Branko Čeak, Jože Maček, Jure Horvat, Shutterstock, iStock; Renders: Inpac d.o.o.; Copy: Neil Morley; Lythography: Tomo Per; Thanks to: Mueller, Amfibija; Printed by: Printera Grupa d.o.o.